



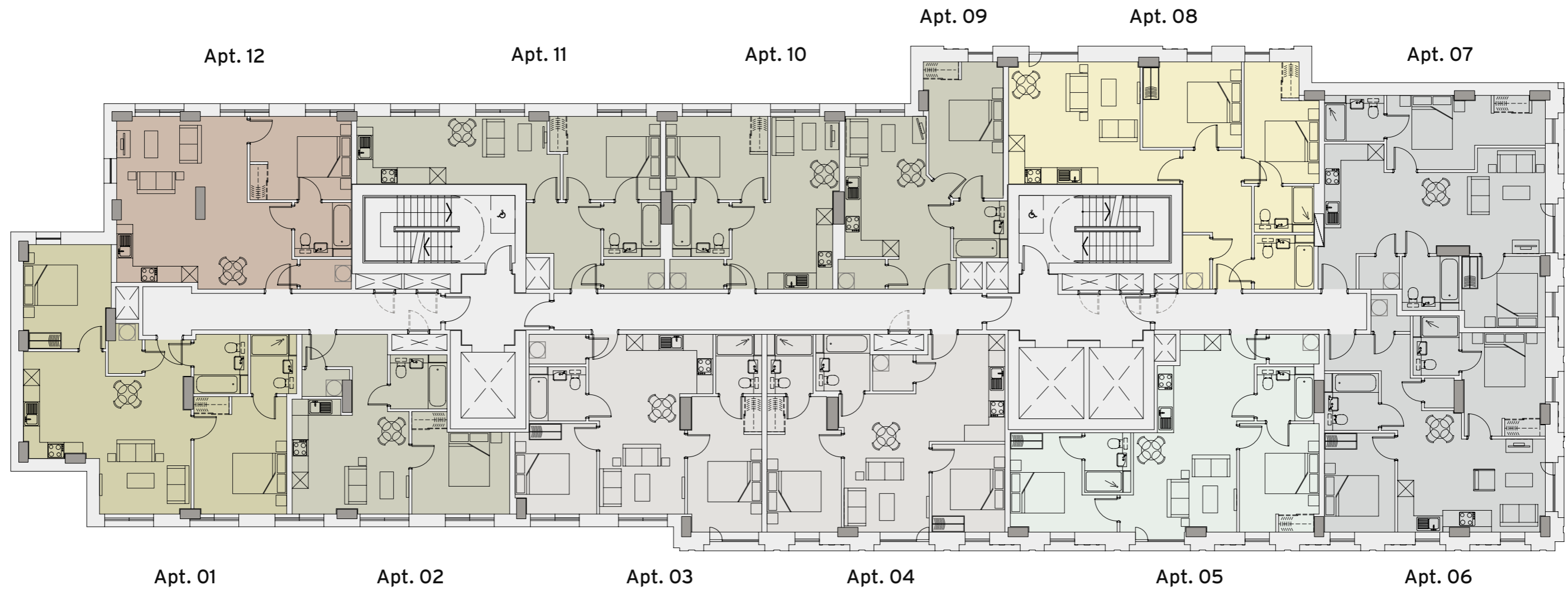
VIVERE

LUXURY COLLECTION

LUXURY LIVING ABOVE THE REST

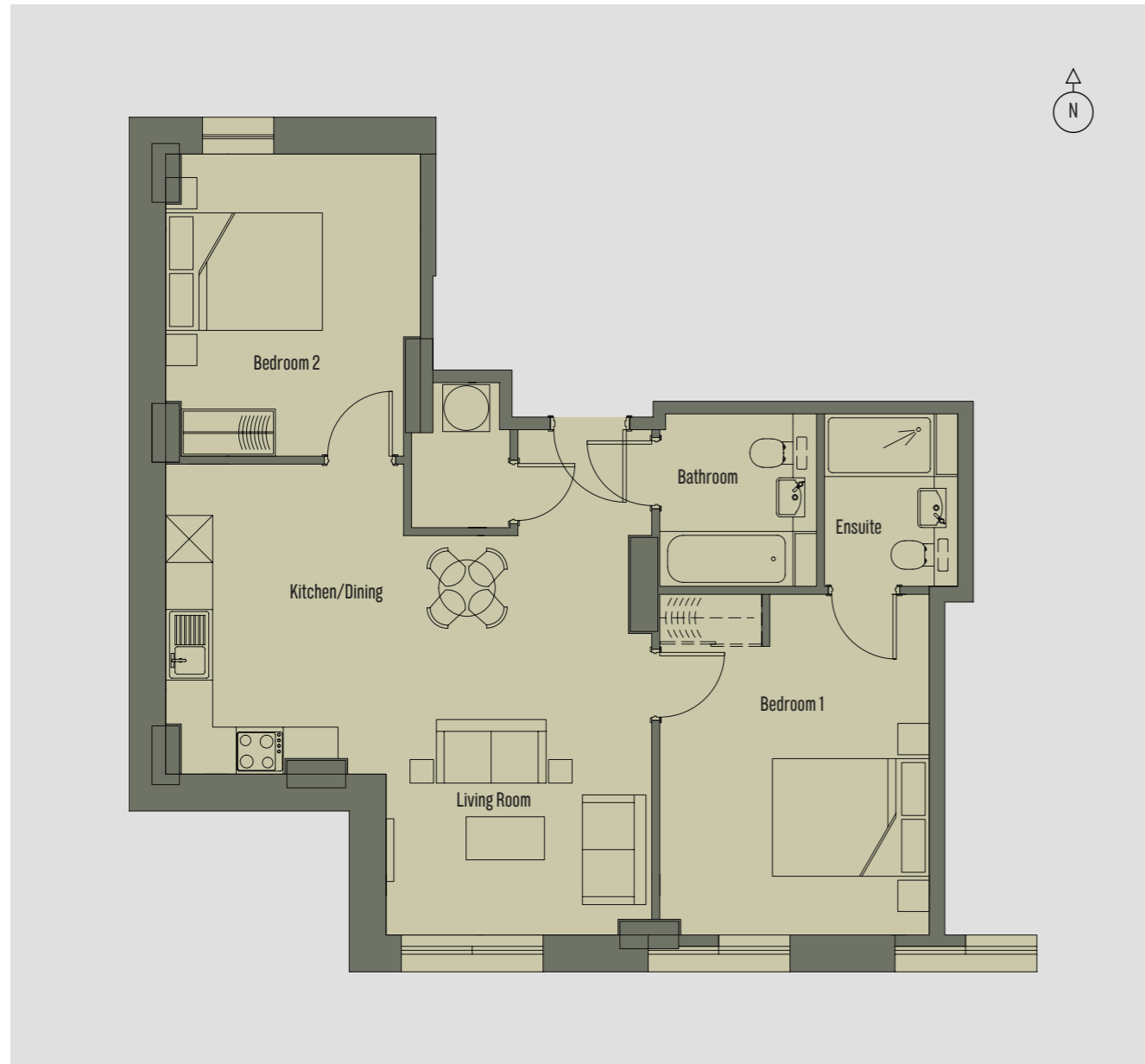
Indicative Twenty First to Twenty Second Floor

- 1 Bedroom Apartment
- 2 Bedroom Apartment
- 2 Bedroom Apartment
- 1 Bedroom Apartment
- 2 Bedroom Apartment
- 2 Bedroom Apartment
- 2 Bedroom Apartment



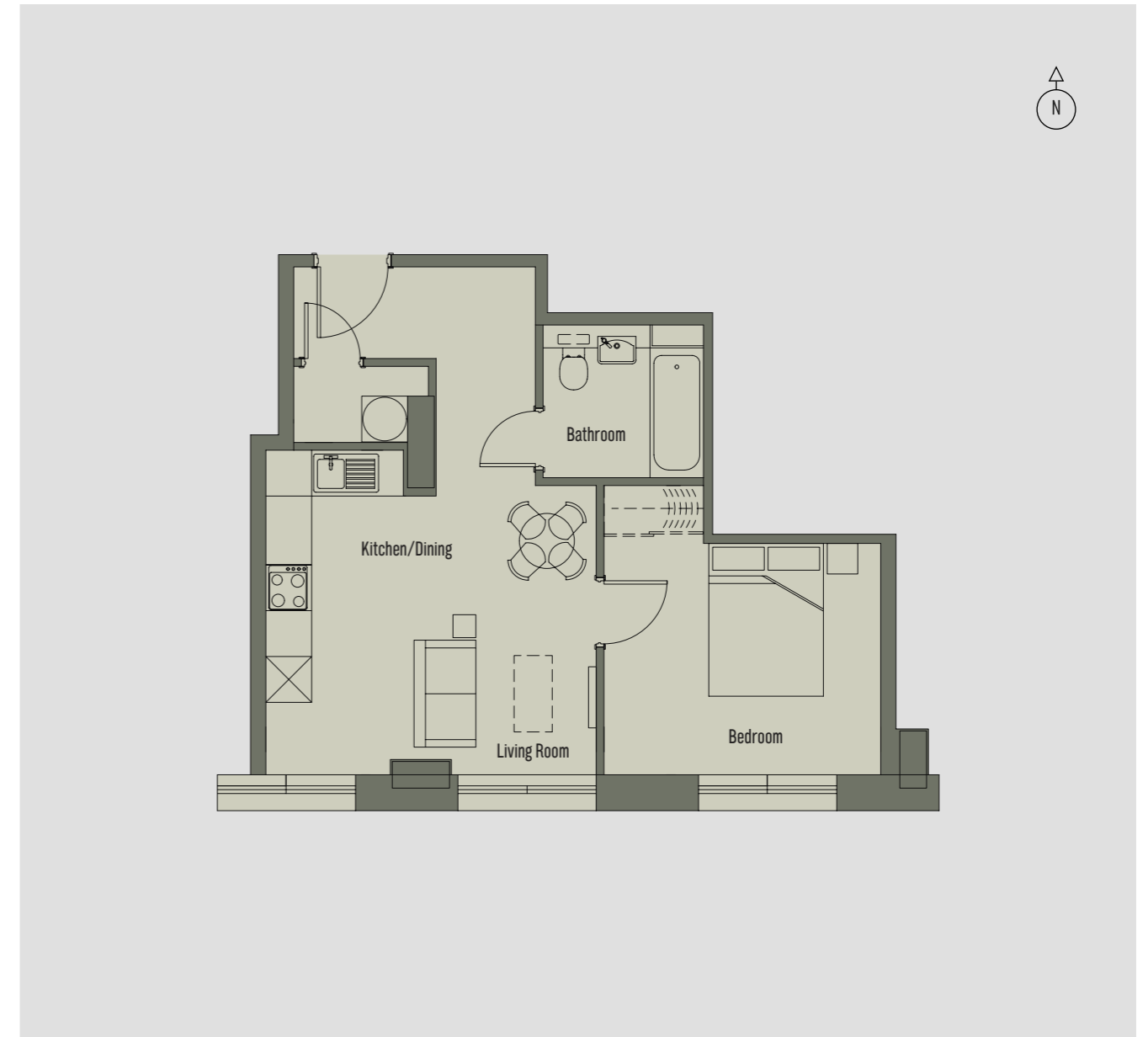
2 Bedroom Apartment Apartment 1 - 70 sq m

Room	Dimensions
Kitchen/Dining/Living Room	6.18m x 5.08m
Bedroom 1	4.33m x 3.42m
Bedroom 2	3.84m x 3.24m



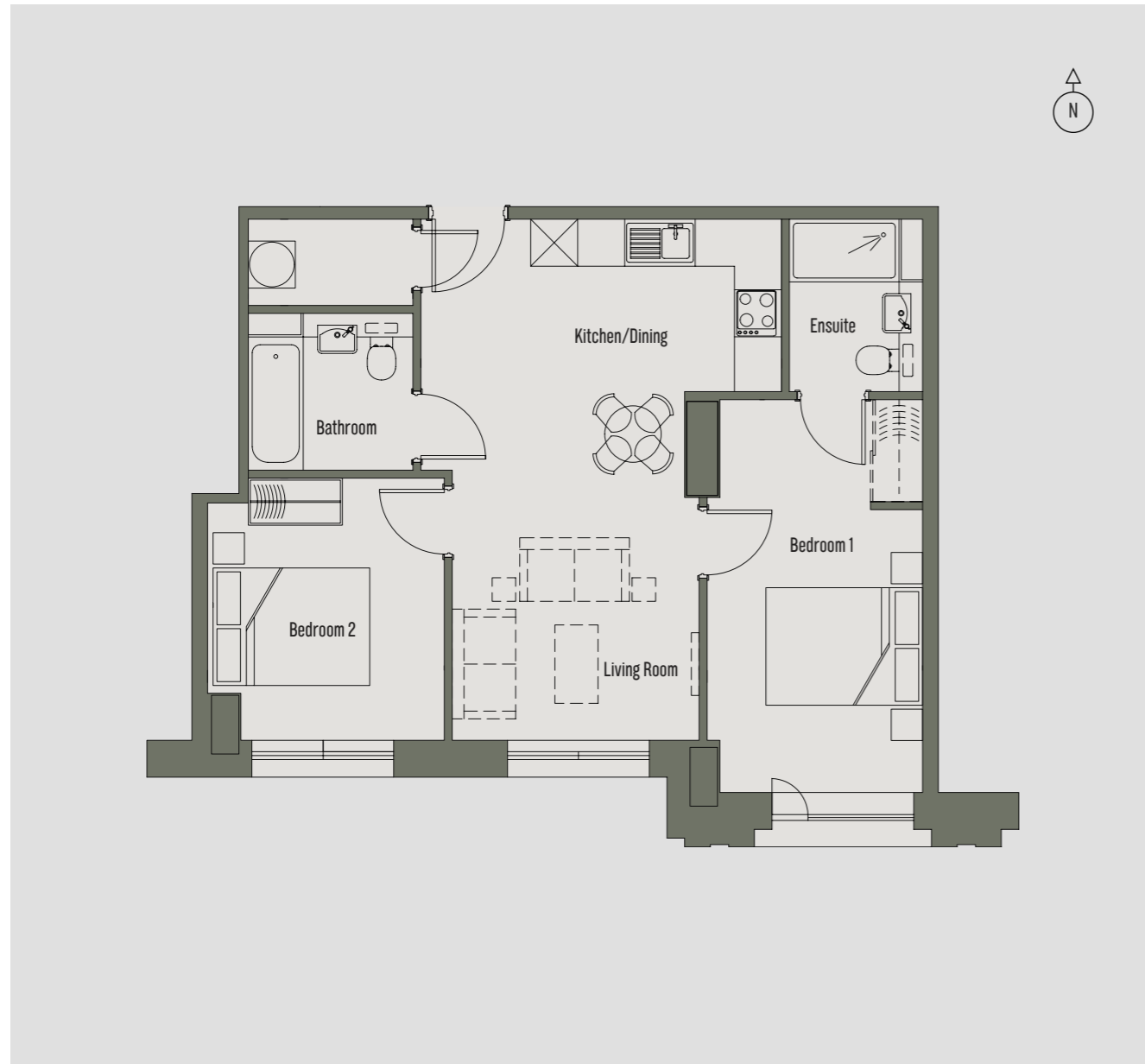
1 Bedroom Apartment Apartment 2 - 43 sq m

Room	Dimensions
Kitchen/Dining/Living Room	4.31m x 4.23m
Bedroom	3.77m x 3.61m



2 Bedroom Apartment Apartment 3 - 61 sq m

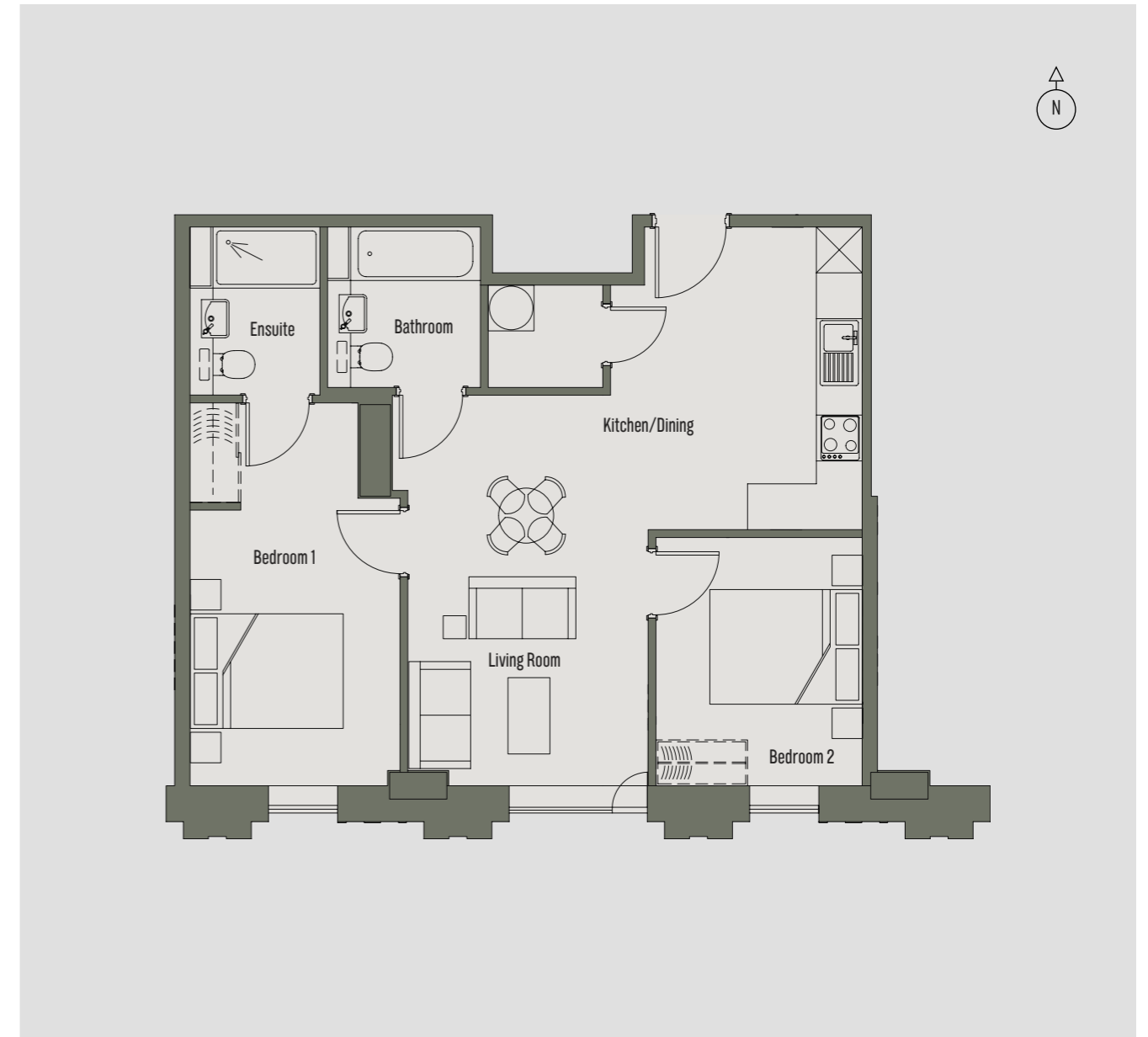
Room	Dimensions
Kitchen/Dining/Living Room	6.63m x 4.58m
Bedroom 1	4.99m x 2.75m
Bedroom 2	3.33m x 3.01m



6

2 Bedroom Apartment Apartment 4 - 63 sq m

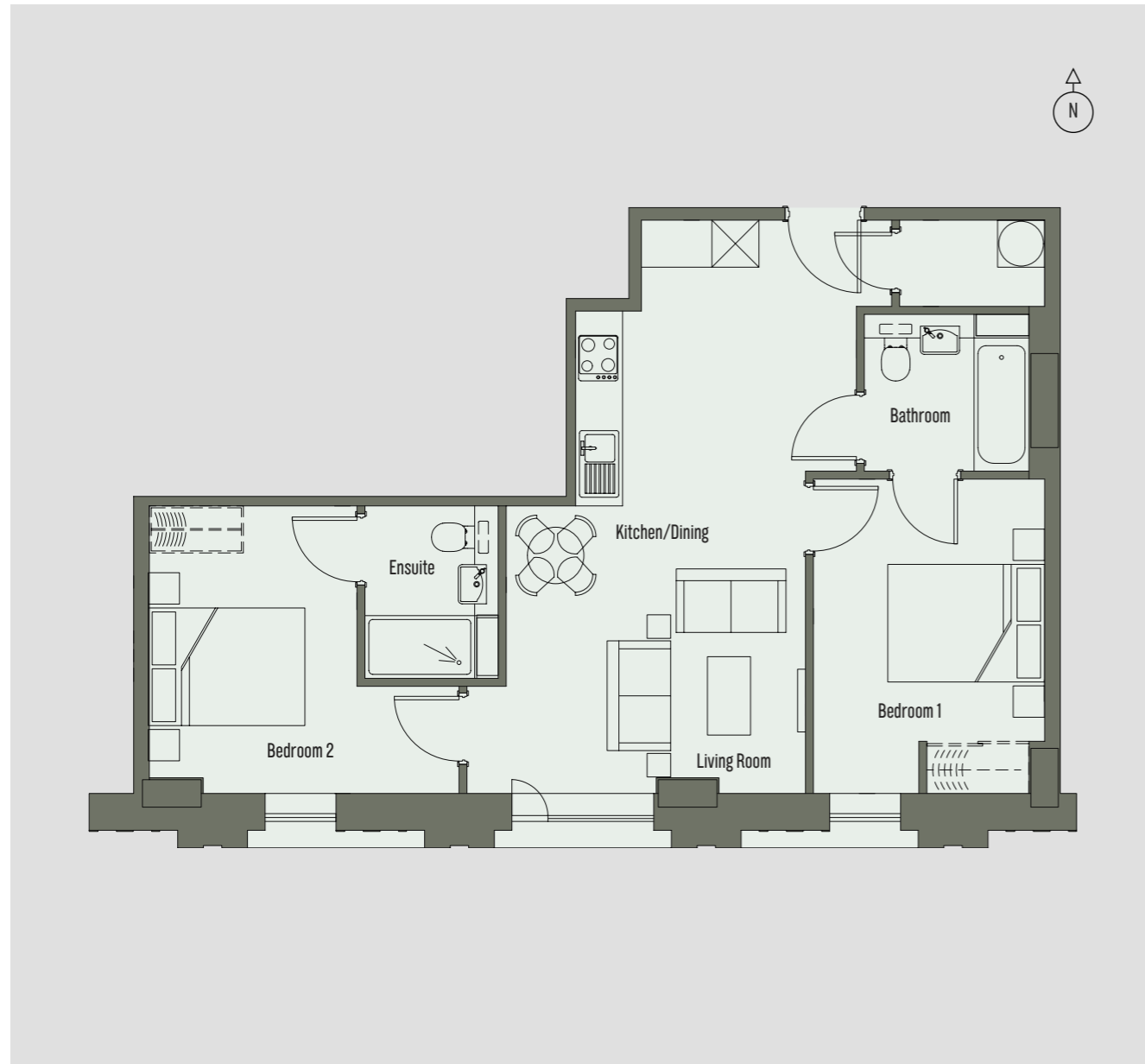
Room	Dimensions
Kitchen/Dining/Living Room	5.09m x 3.14m
Bedroom 1	5.00m x 2.75m
Bedroom 2	3.24m x 2.70m



7

2 Bedroom Apartment Apartment 5 - 62 sq m

Room	Dimensions
Kitchen/Dining/Living Room	7.30m x 3.62m
Bedroom 1	3.99m x 2.95m
Bedroom 2	3.65m x 2.65m



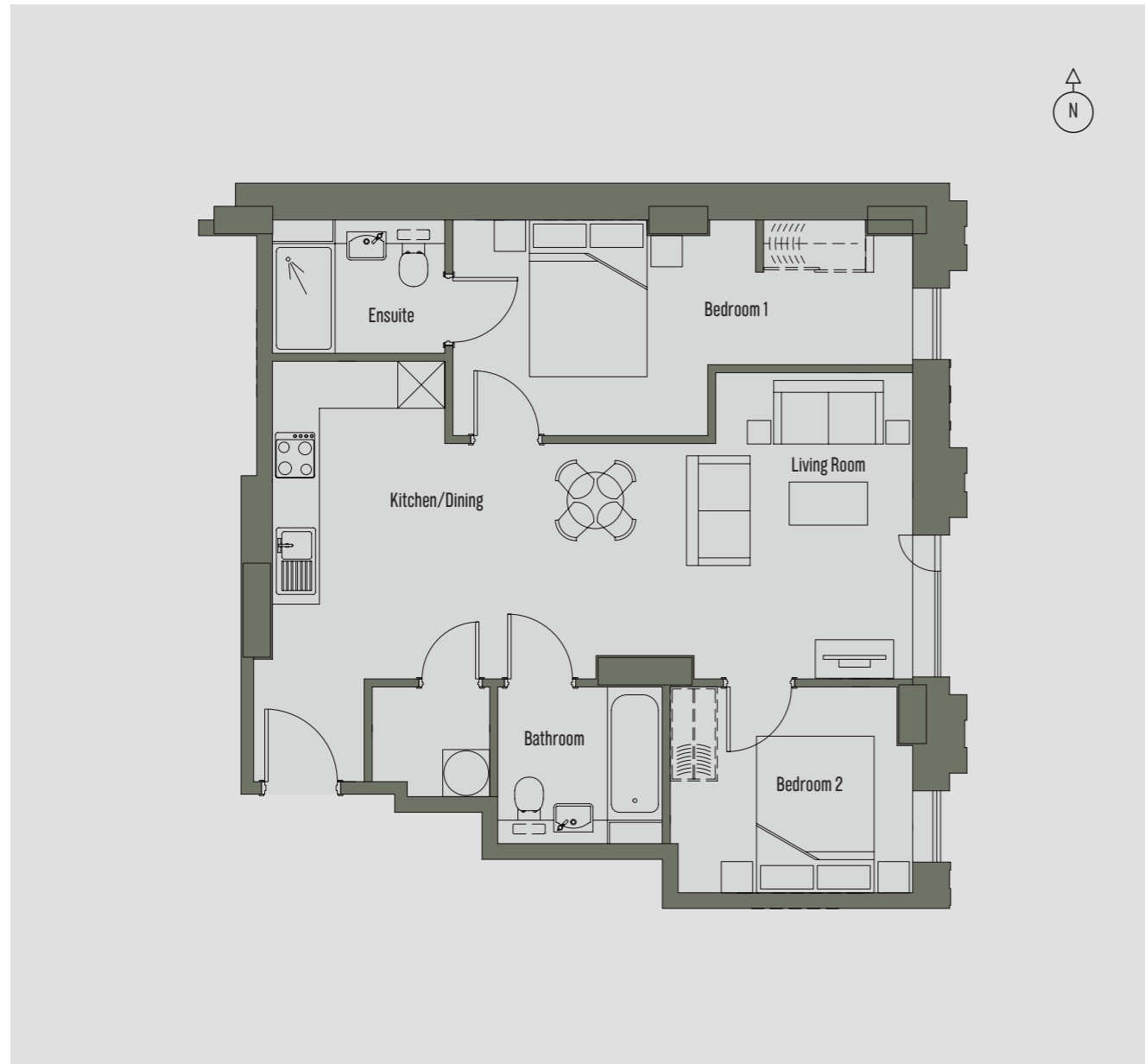
2 Bedroom Apartment Apartment 6 - 63 sq m

Room	Dimensions
Kitchen/Dining/Living Room	5.47m x 4.47m
Bedroom 1	3.81m x 3.09m
Bedroom 2	3.66m x 2.80m



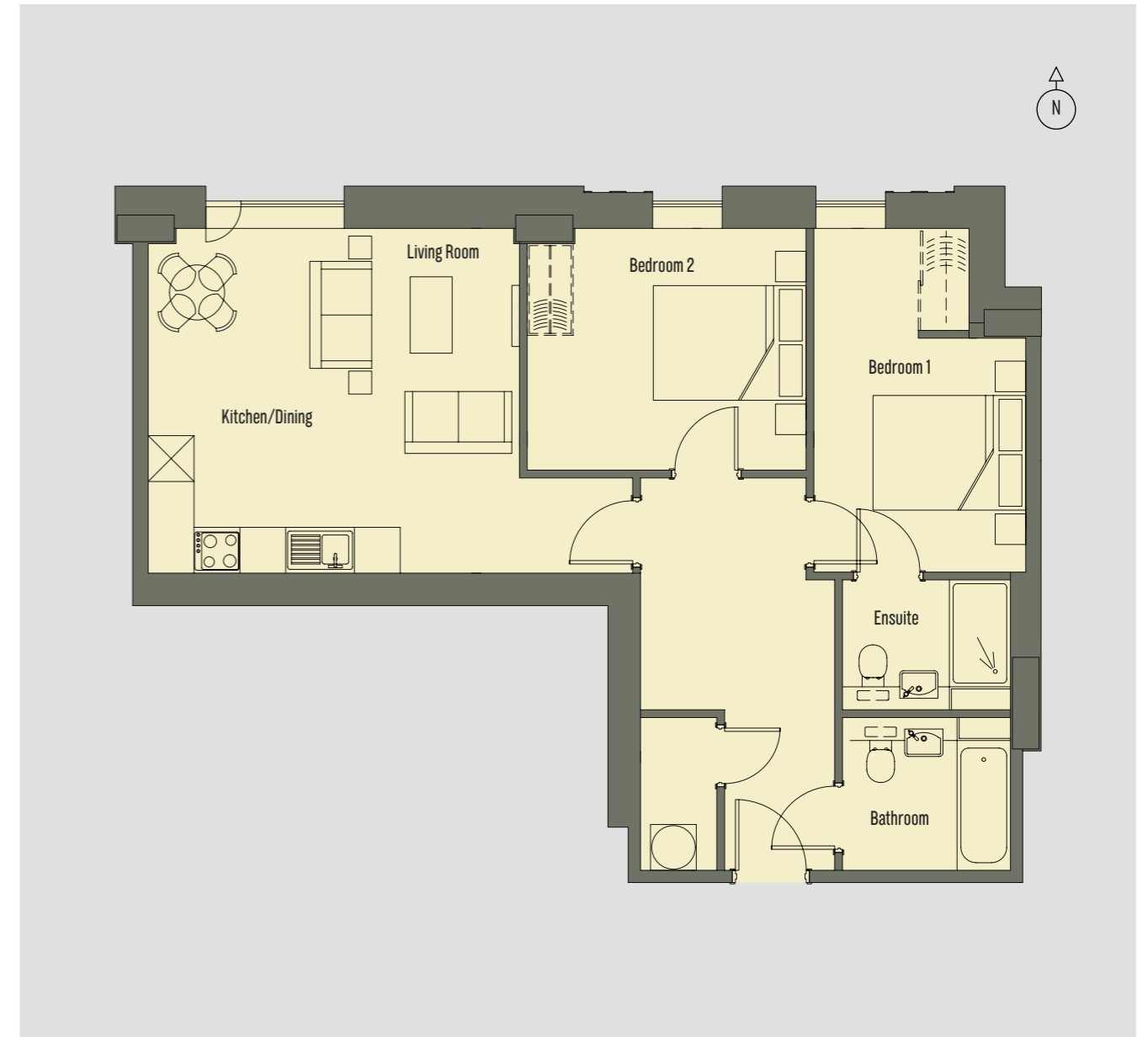
2 Bedroom Apartment Apartment 7 - 65 sq m

Room	Dimensions
Kitchen/Dining/Living Room	8.15m x 5.34m
Bedroom 1	5.85m x 2.75m
Bedroom 2	3.08m x 2.61m



2 Bedroom Apartment Apartment 8 - 70 sq m

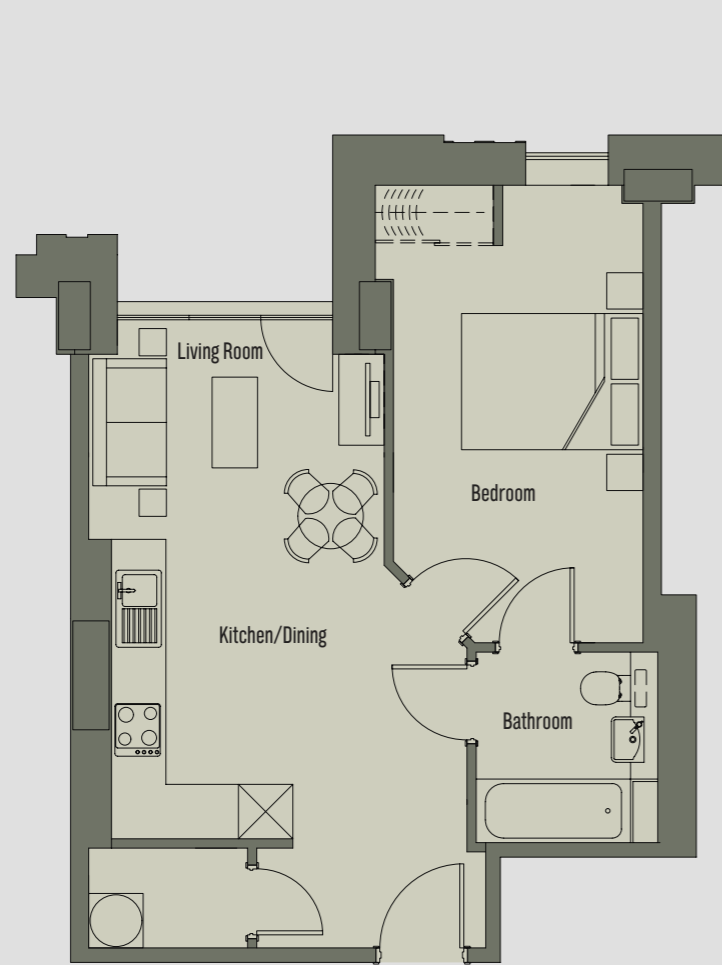
Room	Dimensions
Kitchen/Dining/Living Room	4.86m x 4.50m
Bedroom 1	4.49m x 2.78m
Bedroom 2	3.65m x 3.16m



1 Bedroom Apartment

Apartment 9 - 43 sq m

Room	Dimensions
Kitchen/Dining/Living Room	6.52m x 3.54m
Bedroom	5.02m x 2.75m



1 Bedroom Apartment

Apartment 10 - 43 sq m

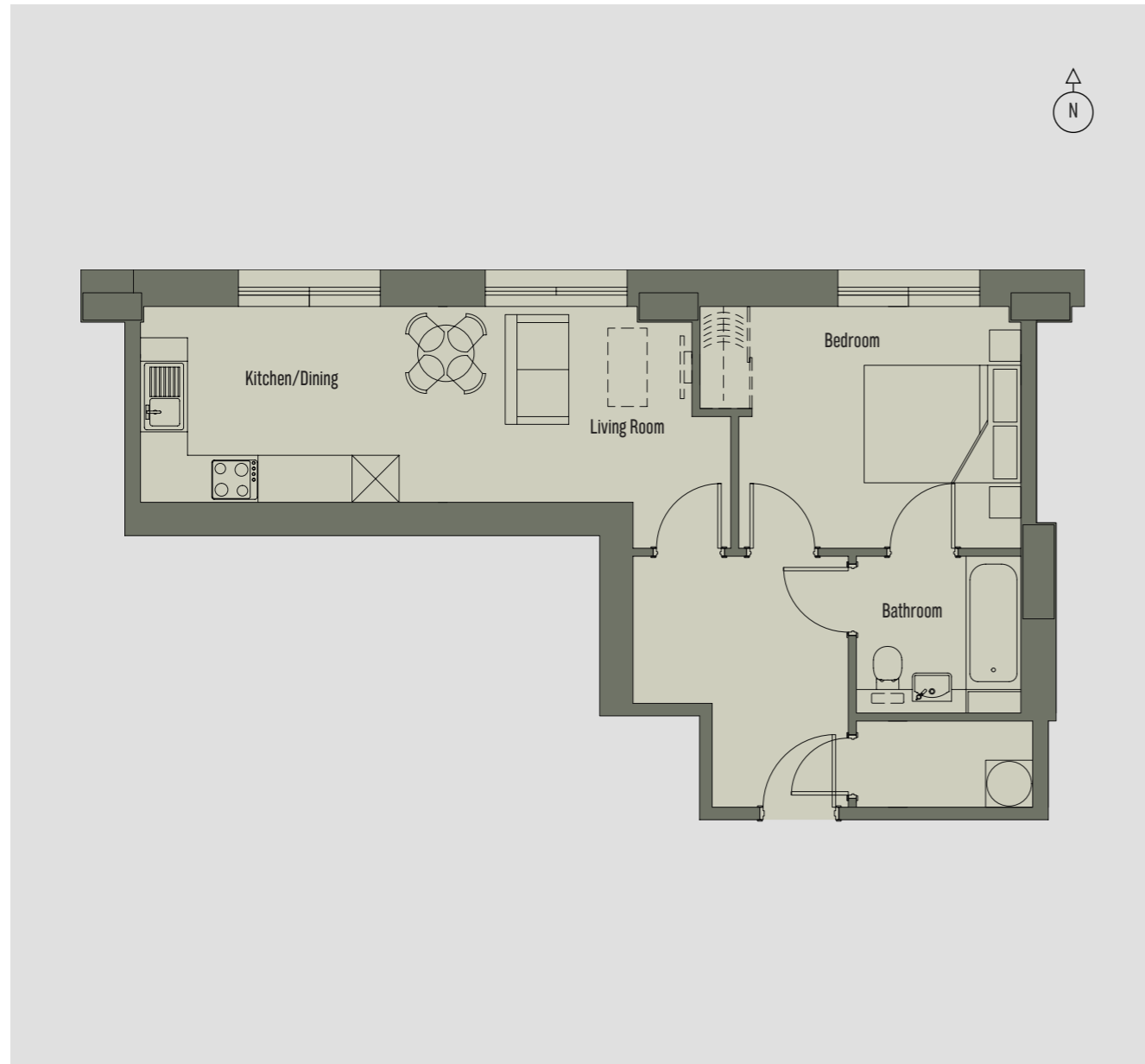
Room	Dimensions
Kitchen/Dining/Living Room	7.14m x 3.72m
Bedroom	3.88m x 2.95m



1 Bedroom Apartment

Apartment 11 - 46 sq m

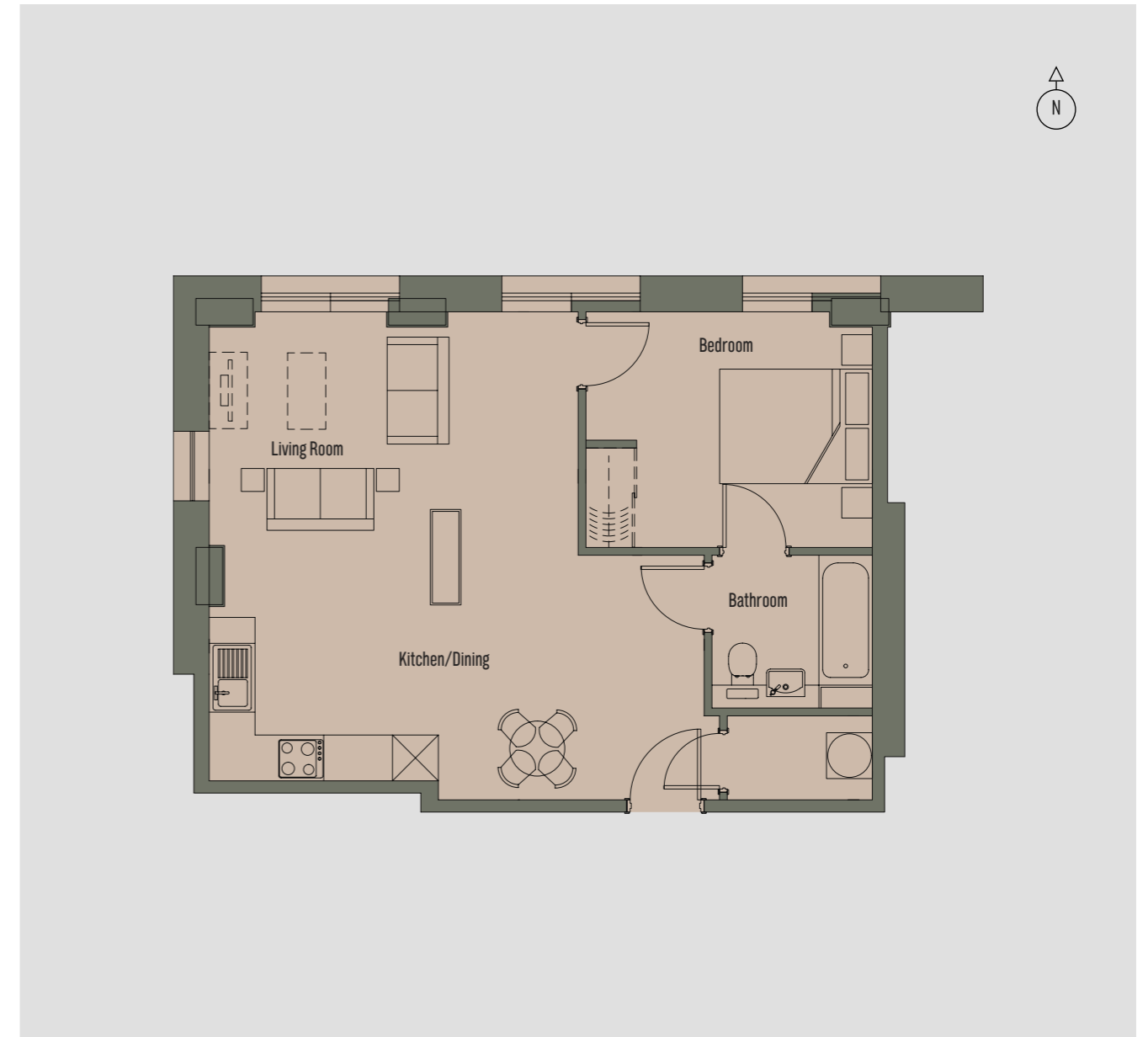
Room	Dimensions
Kitchen/Dining/Living Room	7.02m x 2.48m
Bedroom	4.09m x 3.07m



1 Bedroom Apartment

Apartment 12 - 55 sq m

Room	Dimensions
Kitchen/Dining/Living Room	6.46m x 6.37m
Bedroom	3.75m x 3.08m





Meticulously designed with the finest specification.

LIVING ROOM

- Wood effect plank flooring
- Electric Heating with flat panel heaters throughout
- Low-voltage LED ceiling mounted downlighters
- Stainless steel switches and power sockets
- Ultra-fast broadband connection

BATHROOMS

- Illuminated mirrors
- Quartz Silestone work top
- Premium sanitary ware
- Walls fully tiled to bath areas
- Heated chrome towel rail
- Main bathrooms – WC, wash hand basin, bath with overhead shower and screen.
- Full-width wall mounted mirror above sink
- En-suite bathrooms with WC, wash hand basin with full-width wall mounted mirror, shower cubicle

KITCHENS

- Quartz Silestone work tops
- High quality manufactured contemporary fitted kitchen units
- Stainless steel inset sink
- Premium integrated appliances – hob, oven, extractor hood, fridge-freezer, dishwasher.

GENERAL

- 10 year structural warranty
- Secure environment with electronic controlled access and CCTV through the building
- CCTV to car park, external grounds and internal communal areas
- USB charging points to bedrooms and kitchen
- 24 Hour concierge

BEDROOMS

- Fitted carpets
- Fitted wardrobes to master bedrooms
- Electric Heating with flat panel heaters
- Low voltage LED lighting
- Stainless steel sockets and switches
- Fitted wardrobes to primary bedroom

- Integrated washer/dryer or freestanding in hallway cupboards where space available
- LED under-cabinet lighting to worktops
- Wood effect plank flooring
- Stainless steel sockets and switches



VIVERE

LUXURY COLLECTION

VIVERERESIDENCES.CO.UK